

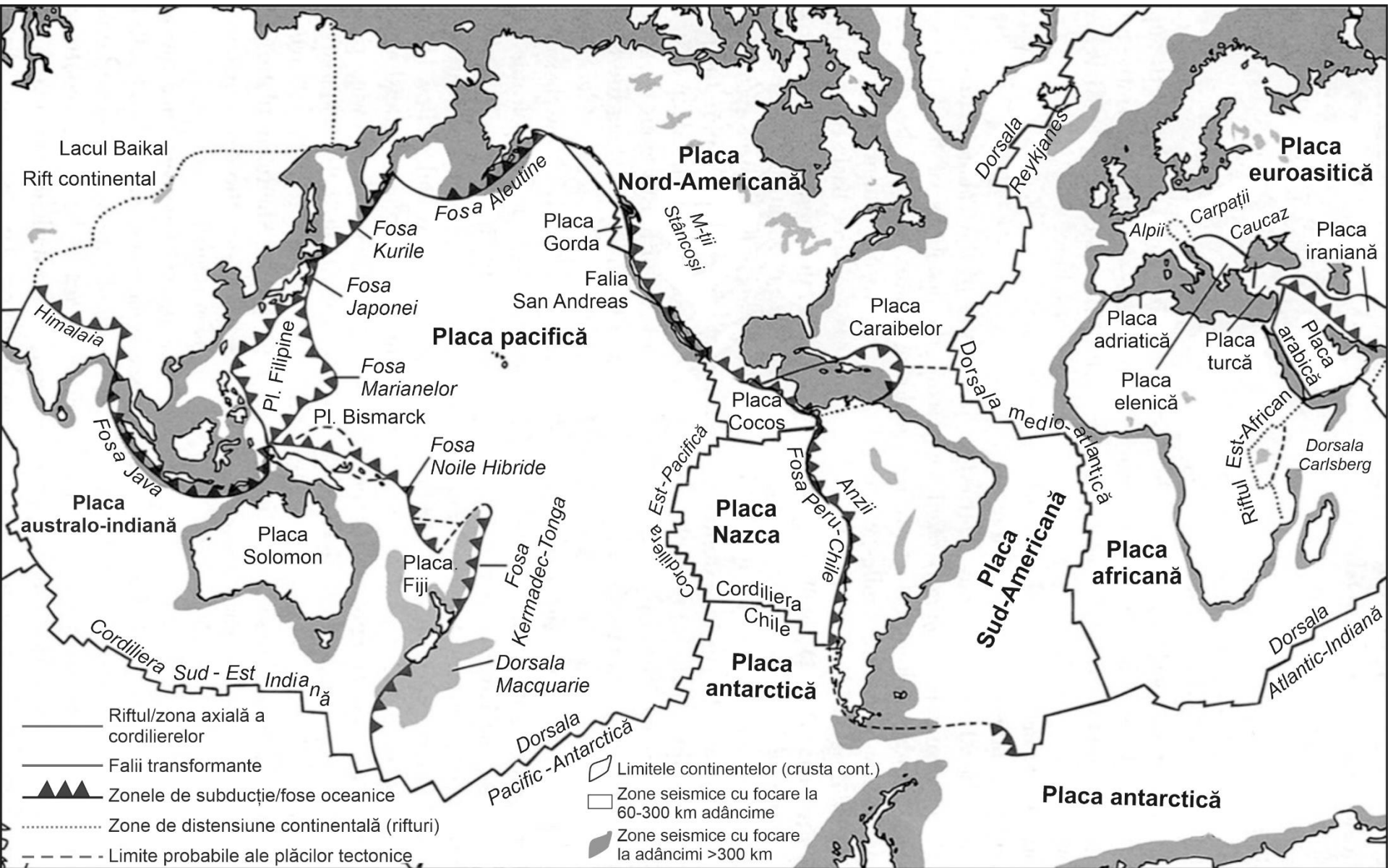
TECTONICA GLOBALĂ



PLĂCI TECTONICE

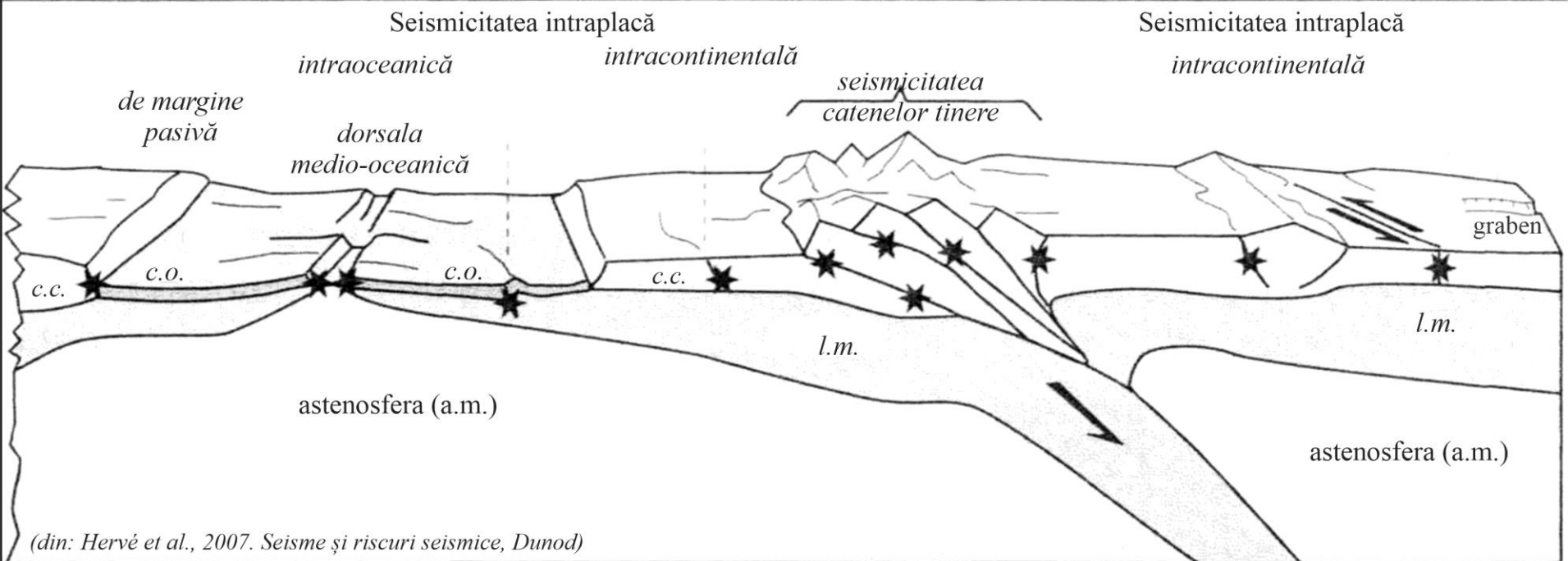
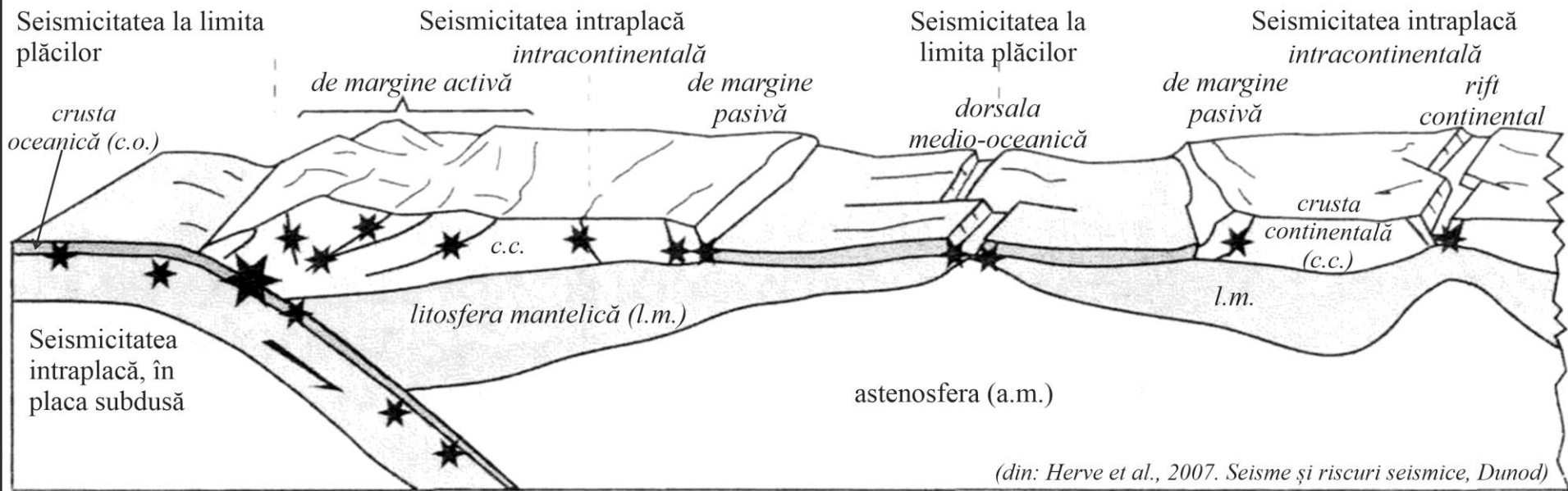
MARGINILE PLĂCILOR TECTONICE
= EXERCİȚIU =

SISTEMUL MODERN DE PLĂCI TECTONICE

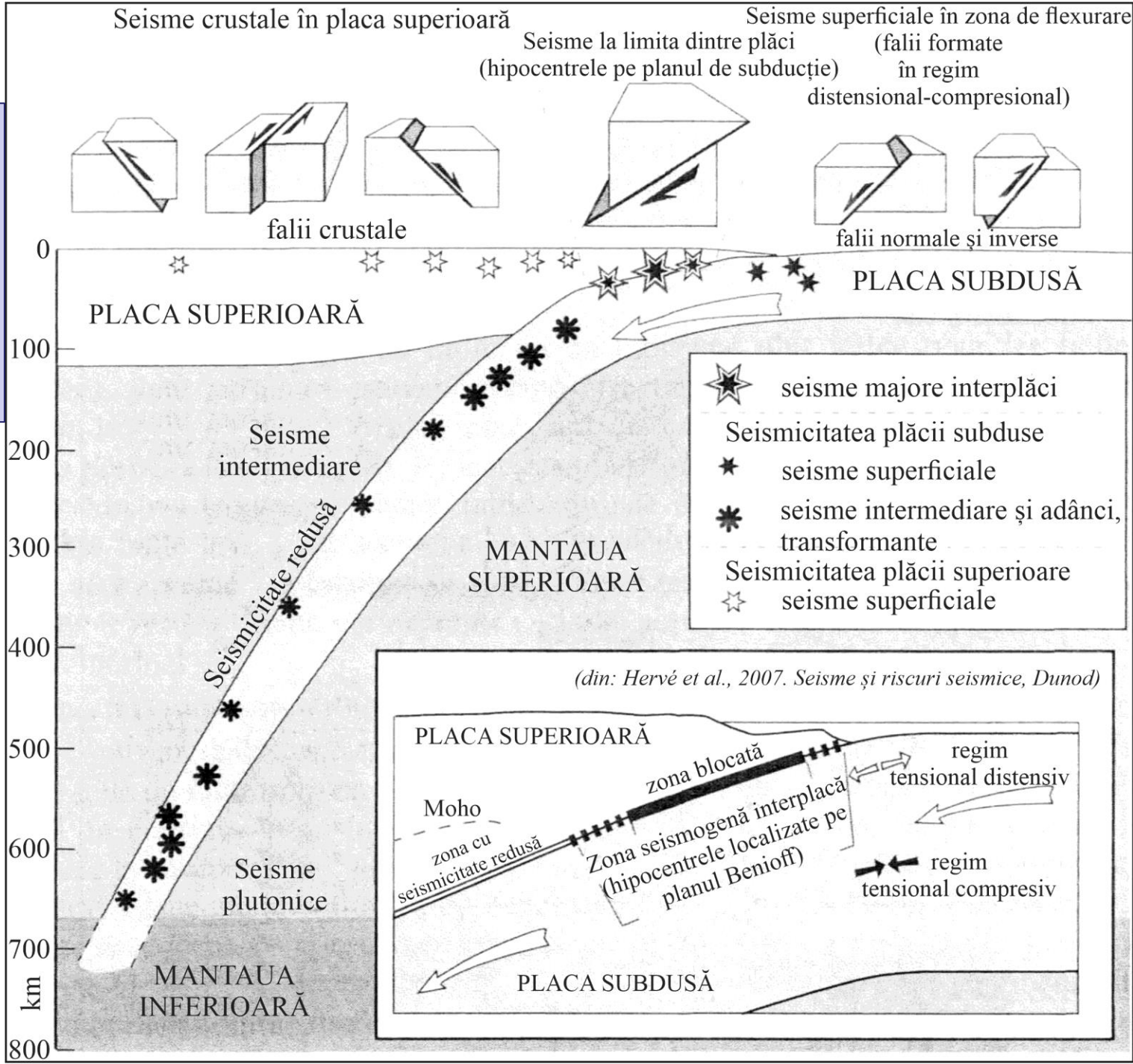


SEISMICITATEA PLĂCILOR TECTONICE

SEISMICITATEA MARGINILOR PLĂCILOR TECTONICE ȘI INTRAPLACĂ



MECANISMELE DE PRODUCERE A SEISMELOR LA CONTACTUL A DOUĂ PLĂCI TECTONICE

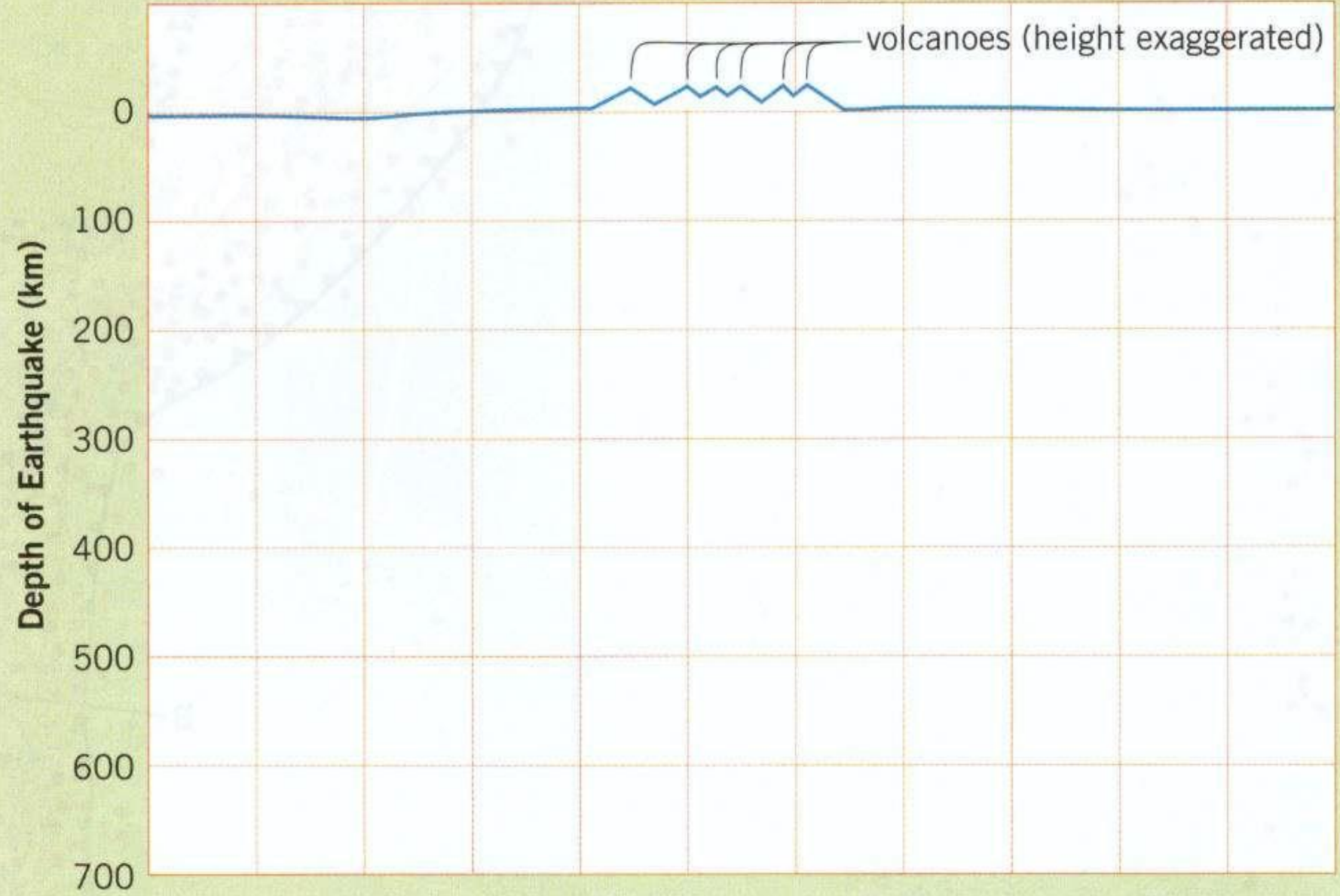


Location East or West of Trench	Depth of Earthquake (or volcano location)
200 km West	20 km
160 km West	25 km
60 km West	10 km
30 km West	25 km
0 (trench)	20 km
50 km East	60 km
80 km East	70 km
100 km East	10 km
120 km East	80 km
200 km East	110 km
220 km East	30 km

Location East or West of Trench	Depth of Earthquake (or volcano location)
260 km East	120 km
300 km East	110 km
330 km East	40 km
330 km East	120 km
390 km East	40 km
390 km East	140 km
410 km East	25 km
410 km East	110 km
410 km East	150 km
450 km East	50 km

Location East or West of Trench	Depth of Earthquake (or volcano location)
450 km East	150 km
500 km East	30 km
500 km East	160 km
500 km East	180 km
590 km East	20 km
710 km East	30 km
780 km East	530 km
800 km East	560 km
820 km East	610 km
880 km East	620 km

B West Distance East or West of Trench (km) East **B'**
200 100 Trench 100 200 300 400 500 600 700 800 900



A. CLASIFICAȚI SEISMELE PROIECTATE ȘI FIGURAȚILE PE PLANUL DE PROIECȚIE

*În funcție de localizarea în raport cu subdiviziunile litosferei

- 1.
- 2.

*În raport cu adâncimea focarelor

- 1.
- 2.
- 3.

*Stabiliți frecvența seismelor în funcție de adâncimea focarelor

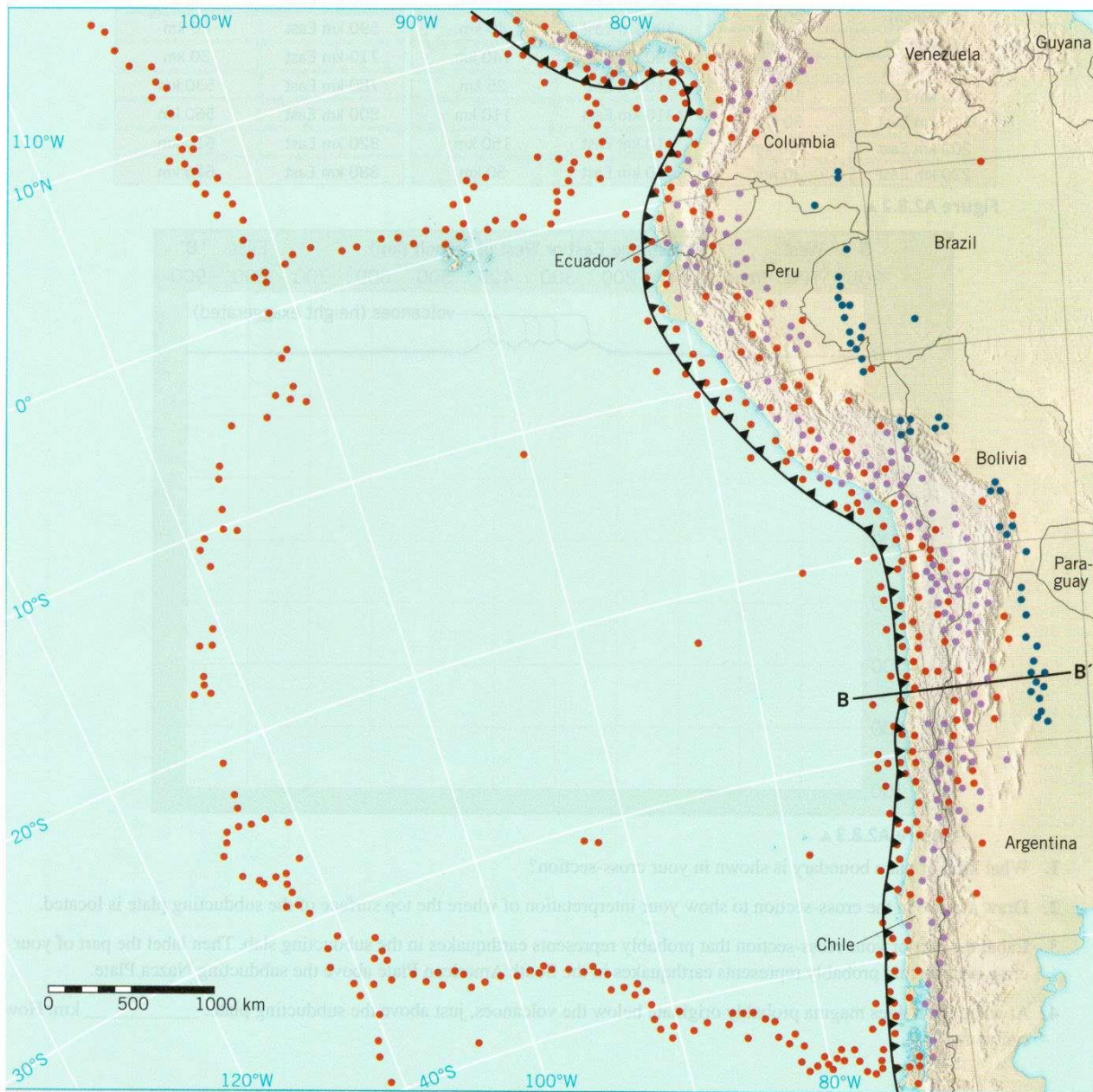
- 1.
- 2.
- 3.

B. PRECIZAȚI TIPUL DE MARGINE A PLĂCII TECTONICE

-

C. PRECIZAȚI TIPUL DE MARGINE CONTINENTALĂ

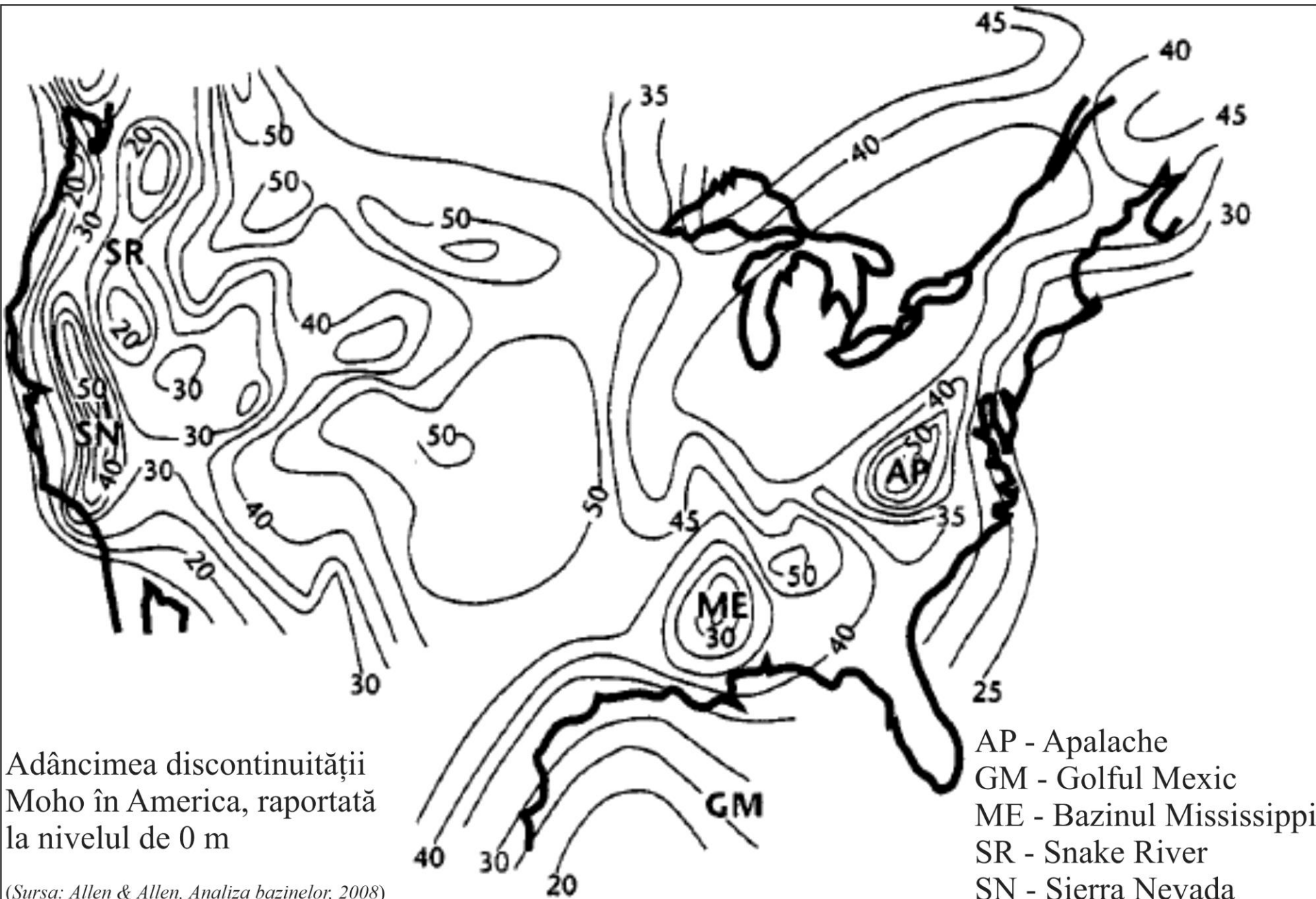
-



Map of Earthquake Activity in the Eastern Pacific Ocean and South America

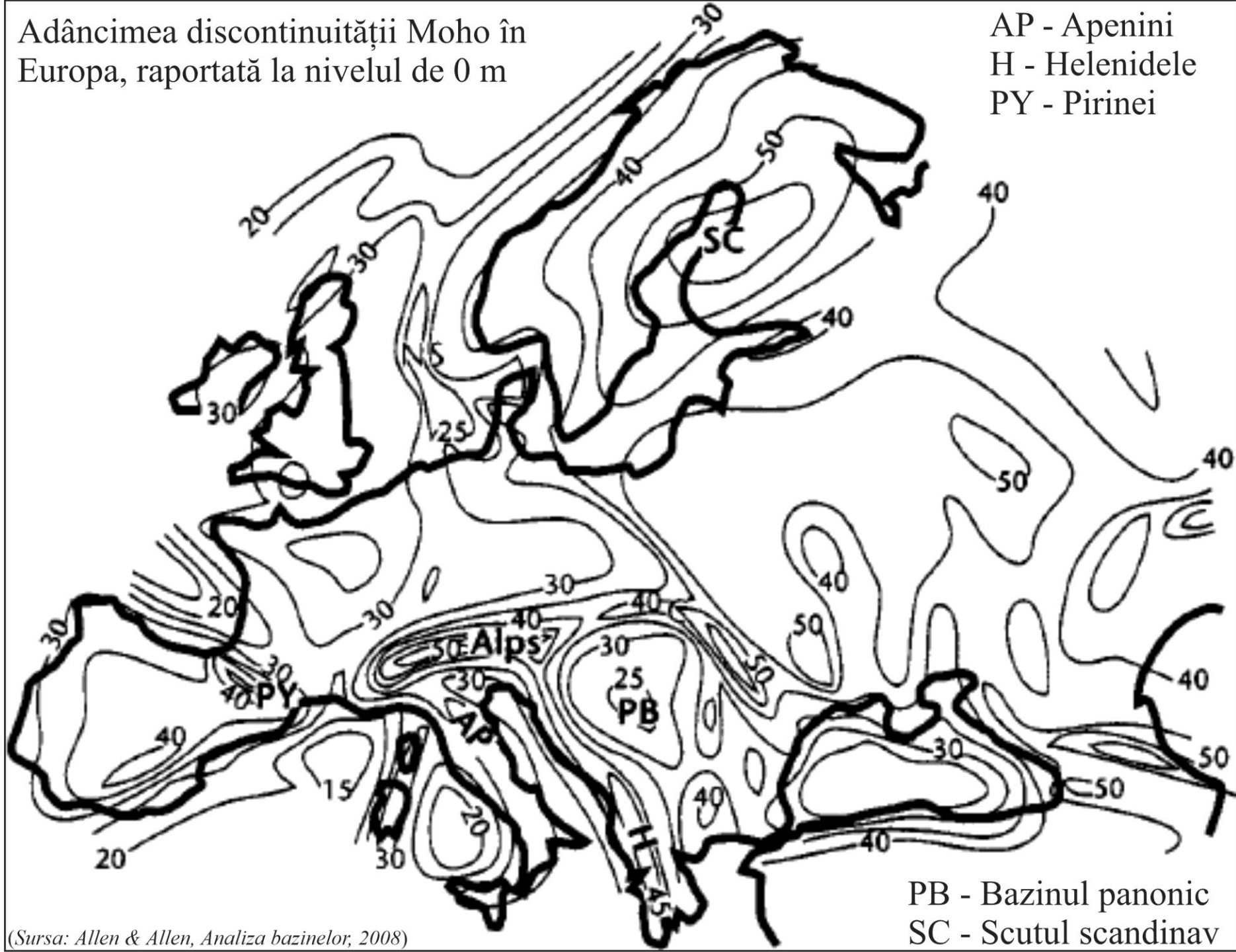
- Shallow-focus earthquakes
0–69 km deep
- Intermediate-focus earthquakes
70–299 km deep
- Deep-focus earthquakes
300–700 km deep
- ▲ Trench

(Data from U.S. Geological Survey)



Adâncimea discontinuității Moho în
Europa, raportată la nivelul de 0 m

AP - Apenini
H - Helenidele
PY - Pirinei



(Sursa: Allen & Allen, Analiza bazinelor, 2008)

PB - Bazinul panonic
SC - Scutul scandinav